

How it Happens

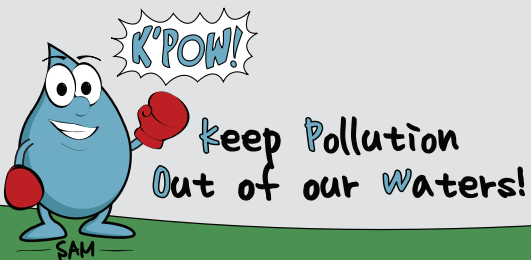
Stormwater runoff is rainfall that isn't absorbed into the ground, but instead runs off to stormwater inlets, nearby lakes or canals, the Intracoastal Waterway, and the ocean. Runoff can pick up debris, chemicals, dirt and other pollutants and carry them into the surface waters we use for fishing, boating and swimming.

Why it Matters

- **Debris** can be harmful to wildlife
- **Nutrients** (from leaves, grass, fertilizers, pesticides and herbicides) can lead to fish kills and excessive amounts of algae in the water
- **Bacteria** (from pet waste and dead animals) can produce health concerns
- **Sediment** can reduce the system's ability to handle potential flooding and adversely affect aquatic organisms
- **Chemicals**, oils, and paints can be toxic to plants and animals

You can help. Intentional dumping or discharging into stormwater systems, as well as accidental spills that could enter the system, should be reported immediately.

If you have any questions or concerns, contact:



Stormwater Pollution Found in Your Area!

This is not a citation.

This is to notify you that the following pollutants were found in the stormwater system in your area:

- Motor Oil/Oil Filters
- Antifreeze/Transmission Fluid
- Paint
- Solvent/Degreaser
- Cooking Grease
- Detergent
- Home Improvement Waste
- Pet Waste
- Yard Waste (leaves, grass, mulch)
- Excessive Dirt and Gravel
- Trash
- Construction Debris
- Pesticides and Fertilizers
- Other _____

Please help us fight water pollution!

This stormwater system flows into:
